

# WinTV-quadHD PCIe Board

## Quick Installation Guide for Windows

### Contents of the WinTV-quadHD package

- **WinTV-quadHD PCIe board**, with four DVB-T/T2/C TV receivers
- **IR receiver cable**
- **Credit card size remote control transmitter**
- **WinTV v10 Download and Activation code card** (WinTV v10 Activation Code)

### What is DVB-T2/T/C TV?

**DVB-T2 and DVB-T digital TV** is over-the-air digital TV for Europe and some other regions such as Australia and New Zealand. DVB-T2/T digital TV typically requires an antenna for reception.

In the UK, FreeviewHD uses DVB-T2 and Freeview uses DVB-T transmissions.

DVB-T2/T digital TV is transmitted in several resolutions, from SD ('standard definition') up to HD ('high definition'). HD has about 16 times the resolution of analog TV. In any resolution, DVB-T2/T digital TV gives sharper pictures than analog cable TV and near CD quality sound.

**DVB-C digital cable TV channels** are TV channels which are broadcast on cable TV "in the clear". These digital cable TV channels are broadcast in various

1

resolutions, from standard definition up to high definition.

WinTV-quadHD has four built-in tuners for over-the-air DVB-T2 and DVB-T and DVB-C digital cable TV. To receive DVB-T2 and DVB-T, you will need an antenna. To receive digital DVB-C cable TV, you will need a cable TV connection.

It uses your PC or laptop's CPU for decoding and displaying digital TV programs on your PC screen. The decoding of high definition DVB signals is very processor intensive, and the smoothness of high definition TV programs depends upon how fast your PC or laptop system is. Other PC activities that consume CPU resources might affect the display of digital TV. Slow video, jerky video and momentary pausing of video are all results of a CPU which is temporarily being used by other activities.

The supplied portable antenna is designed for DVB-T digital TV reception, and will work within 10 miles of an transmitter (reception might be limited by obstructions such as steel buildings).

For the best DVB-T2/DVB-T TV reception, a roof top 'High gain' antenna is recommended.

### Installing the WinTV-quadHD device on your PC

To install, switch off the computer and remove the computer cover.

**Note: Your PC or your WinTV-quadHD PCIe card could be damaged by electrostatic discharge. Avoid this by touching the chassis of your PC before you open the PC or touch the PCIe board.**

- Locate a free PCIe slot. Unscrew and remove the metal cover plate which covers the back of the empty slot.
- Plug the WinTV-quadHD board into the PCIe slot (a X1 or X16 slot will work), and screw the metal cover plate to the PC.
- Replace the computer cover.

2

### Connecting the TV Signal

Plug an antenna for DVB-T2/T digital TV reception, or cable TV for DVB-C digital TV reception, into the TV connector on WinTV-quadHD.

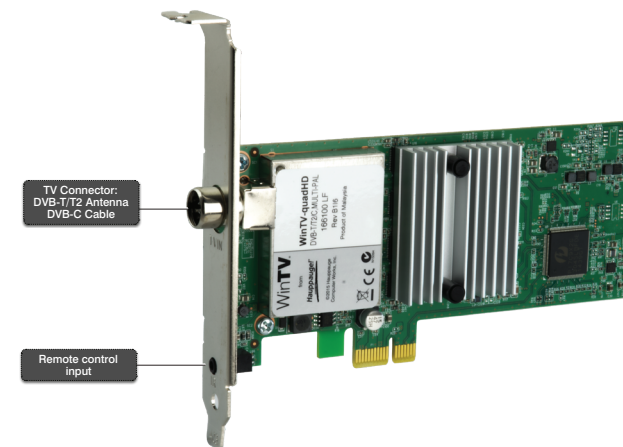
**TV Connector:** for either cable TV for DVB-C digital, or a TV antenna for DVB-T2/T. Plug the antenna cable or the cable TV coax cable into the TV Connector.

**Note: If you are using DVB-T2 HD TV, it is recommended to use a roof top antenna during the first time installation. This will provide better signal quality than a portable antenna.**

### Connecting the remote control receiver cable

Plug the remote control receiver cable into the **Remote control input** on the WinTV-quadHD.

Position the round receiver sensor (at the end of the remote control receiver cable) where it can be "seen" by the remote control transmitter. This is normally at the front of your PC.



3

### Installing the WinTV v10 application for Windows

**Note: Please disable your antivirus software for the duration of the software installation. We find that sometimes antivirus apps block the temporary folders needed for the installation of WinTV.**

**Note: An Internet connection is required for download and software activation.**

You will find the website and directions on the **WinTV v10 Download and Activation code** card along with the **Activation code** for WinTV v10:

[www.hauppauge.com/wintv10](http://www.hauppauge.com/wintv10)

#### Step 1:

Download the WinTV v10 installer by clicking the download button. The WinTV v10 Installer is normally saved in the **Download folder** on your PC

#### Step 2:

Run **wintv10setup** from the Download folder on your PC. Halfway through the installation, a message will pop up asking for you to enter the Activation Code.

#### Step 3:

At the **Activation required** screen, click on **Enter Activation code** and enter the

4



activation code which was printed on the **WinTV v10 Download and Activation code** card. You do not need to enter the dashes, and you can use upper or lower case characters.

#### Step 4:

When the installation is complete, you will find two new icons on your Windows desktop: the **WinTV application** icon and the **WinTV Advanced Options** icon. The WinTV Advanced Options icon, when clicked, has a number of useful WinTV v10 utilities such as to Empty EPG, Erase channel database and others.

Double click on the **WinTV icon** and the WinTV application will run. **On the first run of WinTV, it will automatically go through the TV source selection and WinTV will scan for channels.**

Set the check mark according to the connected signal and click on **Next**.

If you receive DVB-T via antenna or DVB-C via cable, select the country and region. If your region is not listed, choose the preset selection.

Click **Next** to start the search.

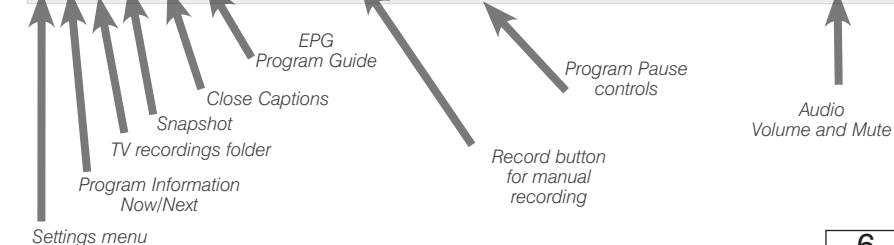
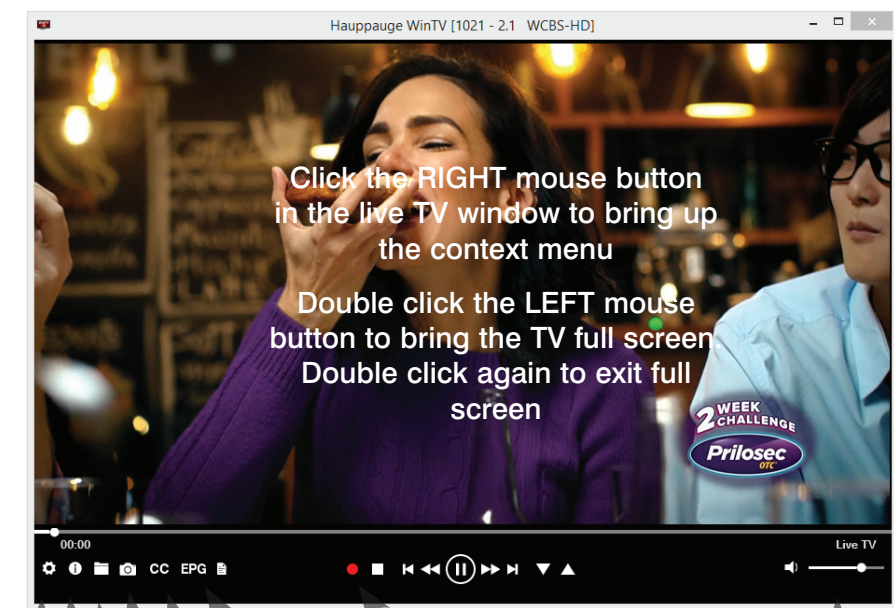
Stations found are listed during the search.

When the search is complete, click **Next** to save the channels found.

**Note: if you complete the channel scan and no channels are detected, you can try the following: check your antenna connections, reposition your antenna, add an antenna signal booster, or get a larger antenna. Information on rescanning for TV channels can be found here: [www.hauppauge.com/rescan](http://www.hauppauge.com/rescan)**

5

### Using the WinTV v10 application



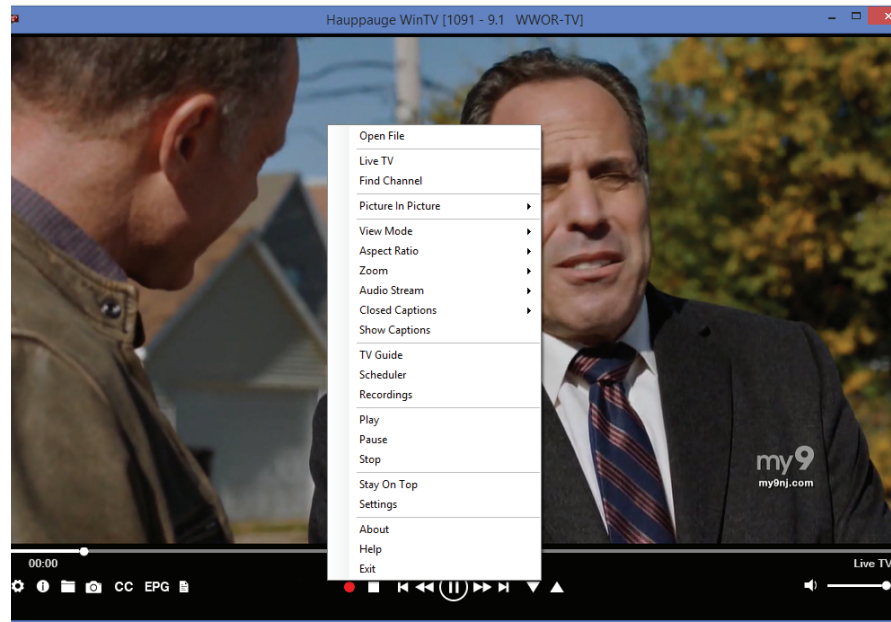
6

## The WinTV v10 Menu

### The Main WinTV Menu (context menu)

**Right-click** inside the TV window or click on the **menu button** on the WinTV toolbar to display the **Context Menu**. The following options are available.

«**Open file**» Open up a TV recording or other video file for playback in the WinTV window.



7

program title with your mouse to see more details about the entry. To record a program, click on Record in the details view. The scheduled recording is added to the Scheduler window. To rescan all frequencies for TV Guide information, click on Update EPG.

«**Scheduler**» The Scheduler allows you to record a TV program at a certain date and time on the specified channel. It lists all scheduled recordings added by the TV Guide as well as any manual recordings that have been set. From here you can Edit or Cancel (delete) existing schedule entries.

To schedule a new recording, click on the Add button. You will need to select the channel, set the start time, duration etc. and confirm with a click on the Record button.

**Note:** *The WinTV application does not have to be running for a scheduled recording to work, but your PC will need to be either turned on or in Standby (not Hibernate). All scheduled recordings are performed in the background by the task "WinTVRec.exe". If a recording is started while you are watching live TV, WinTV will display the TV program being recorded.*

«**Settings**» Click the Settings button to open the **WinTV Settings** window.

«**Settings**» **General:** Select the language and the preferred Audio and subtitle languages. You can also specify the video renderer to be used and the TV shape.

«**Settings**» **Capture:** Specify where the recordings, pause files and snapshots will be stored.

«**Settings**» **Devices:** To rescan for TV channels, select the device you wish to configure from the list and click on Tuner Setup.

«**Settings**» **All Channels:** You can enable or disable the listing of channels with the **select box in the first column**. The Context menu allows you to select all channels, to delete the selected channel(s), to watch the selected channel or to display details about the channel.

10

«**Find Channel**» This brings up the Channel List. Click on a channel entry to select this channel for watching. To filter the channel list, type in a channel name (or a part of the name). Click on the Pin-Button to permanently show the channel list. The channel list will also be displayed if you just enter any character (a - z) in live TV mode.

### «Picture in Picture»

There are four ways to use the Quad Tuner function on WinTV-quadHD:

**1. Recording up to four overlapping TV programs:** you can schedule up to four overlapping TV shows from the TV Guide or manually. Using four tuners is automatic as long as you do not schedule more than four overlapping recordings.

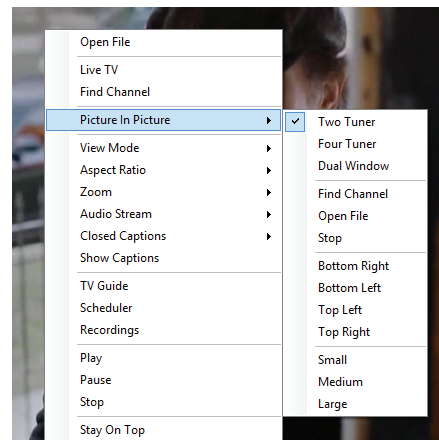
**2. Watch one live program while another program is being recorded:** you can watch one live program in WinTV v10 and continue watching, when a scheduled recording takes place. The free tuner is used automatically for the recording.

**3. Watch four TV tuner Picture-in-Picture:** in Picture in Picture, click **Four Tuner**. You will now see the WinTV window with four sections, one for each tuner.

To change the channel on a tuner, **RIGHT click** on the quadrant you want to change, then click **Select channel** and select your channel. Do this for each tuner.

To exit four tuner mode, select the TV program in the quadrant you want to watch and **DOUBLE LEFT click**.

**4. Watch two separate WinTV windows, each with their own TV channel:** in



8

«**Settings**» **Favorites:** Here you can define groups of your favorite channels.

«**Settings**» **Advanced Options:** From this menu you have options for:

- Automatically starting TV when WinTV v10 opens
- Disable the Now/Next channel information
- Disable any On Screen Display graphics
- Auto convert the standard .TS recordings to the .mpg format

### «Settings» Decoders

The Decoders section allows you to test and use third party video/audio decoders. (The use of third party decoders is an unsupported feature but helps in some situations.)

### Infrared Remote Control

The WinTV-quadHD has the IR receiver mounted at the end of the IR receiver cable, the round receiver sensor.

Before using the remote control, insert the battery into the remote control, following the correct polarity.

On start up of Windows, the IR software (**ir.exe**) is loaded from the Startup folder ("AutoStart IR"). When ir.exe is loaded, you see a black remote control icon in the system tray area on the Windows task bar (next to the clock).

### Notes on Using the Remote Control

- When using the Hauppauge remote control, point it towards the round IR receiver sensor.
- The WinTV application only responds to the remote control if it is the active window.
- If the IR is not responding, run the **"Restart IR"** shortcut in the Start menu or in the **WinTV Advanced Options** folder on your Desktop.

11

**Picture in Picture**, click **Dual Window**. You will now have two completely separate windows, each with their own TV program.

### «View Mode»

Normal, No Title and Fullscreen are available. In **Normal** view all control elements and buttons are visible. In the **No Title** view only the TV image is shown. In the **Fullscreen** view the TV image fills the whole screen. You can also switch between these views by double clicking inside the TV window, or by pressing <Ctrl> W on the keyboard.

### «Audio Stream»

If the current TV broadcast offers more than one audio stream / language, you can select the other stream / language here.

### «Show Captions»

Select this option to display **close captions**. If close captions are available, the On Screen Display message "Captions: On" is shown for a few seconds, and close captions are displayed. If close captions are not available, the OSD message does not appear. To turn off close captions, select "Show Captions" again.

**Note:** *captions are recorded when making a WinTV recording. When playing back a .ts recording, captions can be displayed by selecting Show Captions.*

### «Stay On Top»

If enabled, the WinTV application window will remain in view over any other application windows, even if it is not selected. To turn on, select "Stay On Top". To turn off, select this option again.

### «TV Guide»

Some digital TV channels transmit Electronic Program Guide information (EPG). This information is collected and displayed in the TV Guide window. Click a

9

## WinTV Keyboard Commands

Next Channel = Plus (+)

Previous Channel = Minus (-)

Last channel (the channel you were tuned to previously): Alt P

Increase Volume = Page up

Decrease Volume = Page down

Show Channel List = Ctrl + L

Mute = Ctrl + M

Display Info = Ctrl + O

Stream Details = Ctrl + D

Teletext = Ctrl + T

Pause Video = Ctrl + Q

Play = Ctrl + P

Skip Ahead = Ctrl + F

Skip Back = Ctrl + R

Live (now) = Ctrl + C

Full Screen = Ctrl + W

Subtitles on / off = Ctrl + S

WinTV Settings = Ctrl + I

Start TV = Alt + T

Last Channel = Alt + P

Start Recording = Alt + R

Stop = Alt + S

Open File = Alt + F

Make Snapshot = Space Bar

Change Aspect Ratio = Ctrl +

Exit Full Screen = Esc

## Troubleshooting

### How Can I Rerun the Channel Scan?

To scan for channels again, in the main WinTV window click on the **gear icon** (lower left hand corner of WinTV), then select the **"Devices"** tab, click on the **WinTV-quadHD** entry and click on **"Tuner Setup"**.

Click **Next** and **Next** to start the channel scan.

A video showing how to do the channel scan can be found here:

[www.hauppauge.com/rescan](http://www.hauppauge.com/rescan)

12